

Ormskirk Paediatric Emergency Department Monthly Bulletin: January to December 2010

This bulletin provides a breakdown of all injury attendances at Ormskirk Paediatric Emergency Department (ED) between January and December 2010.¹

Between January and December 2010 there were 5,620 ED attendances. Injury attendances peaked in May (n=611), with December (n=235) having the least number of injury attendances (**Figure 1**).

Figure 2 illustrates injury attendances by gender. For all months there were more male (61%) injury attendances than female presenting at Ormskirk Paediatric ED.

Figure 3 presents the age group of injury attendances. Across the whole year two-fifths (40%) of injury attendances were made by people aged between 10 and 14.

Table 1 details the injury group of injury attendances. The majority of injury attendances were classified as other injury (72%). Just over one-fifth (21%) were recorded as sports Injury and 4% road traffic collisions (RTCs).

Table 2 illustrates the source of referral for patients presenting with injuries. The majority (92%) of injury attendees were recorded as other. **Table 3** presents injury attendances by location of incident. Nearly four in ten (36%) of all injury locations were recorded as in the home. **Table 4** shows the disposal method of injury attendances. Seven in ten (70%) attendees were discharged requiring no follow up.

Assault attendees presenting at the Ormskirk ED between January and December 2010 were mainly male (72%) and the primary location of assault was in a public place (46%).

Figure 1: Total number of injury attendances by month, January to December 2010

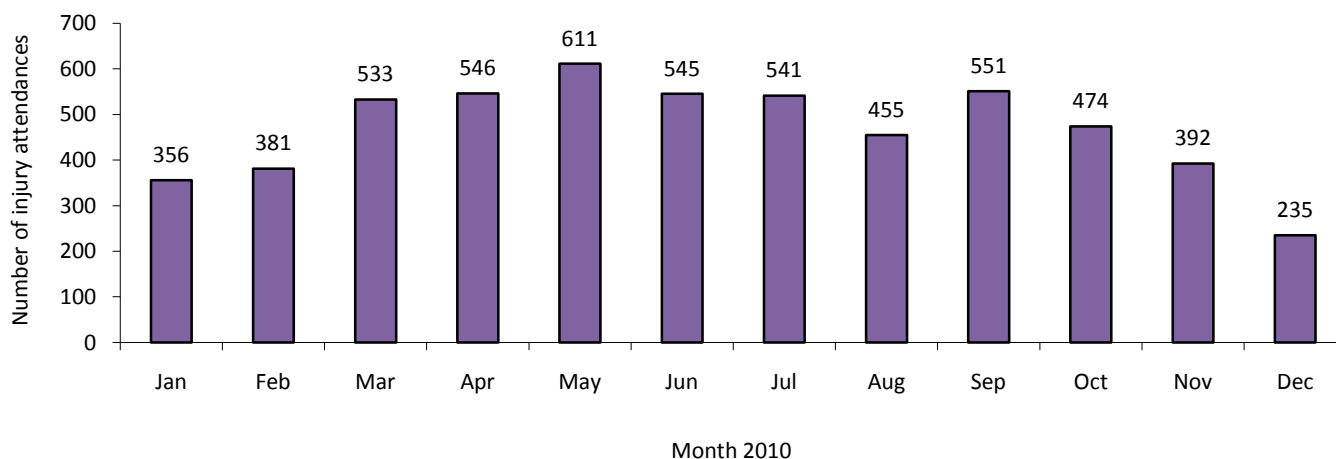


Figure 2: Gender of injury attendances by month, January to December 2010

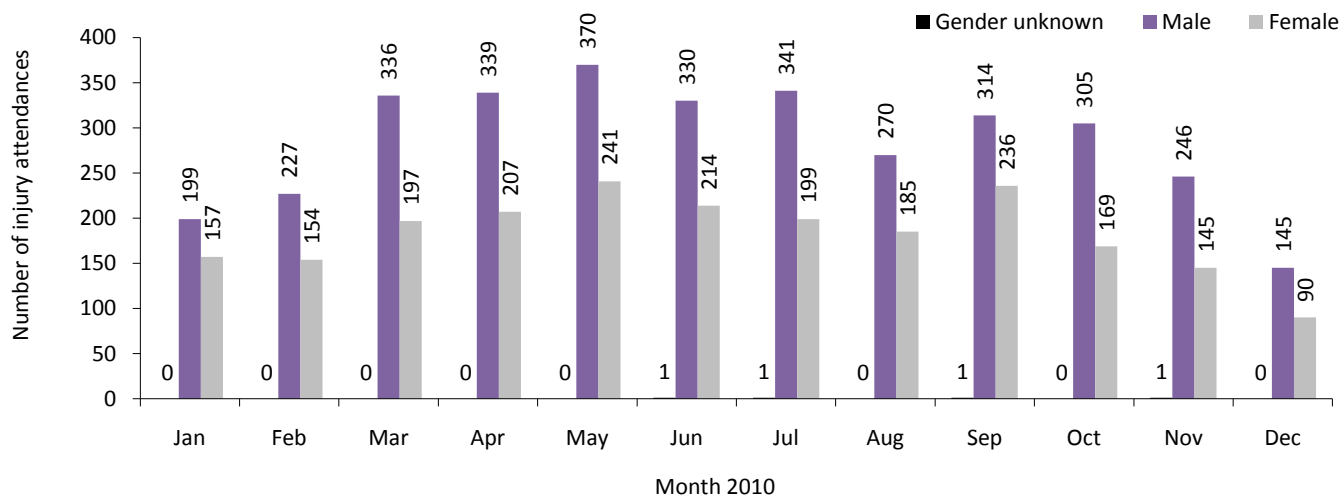


Figure 3: Age group of injury attendances by month, January to December 2010

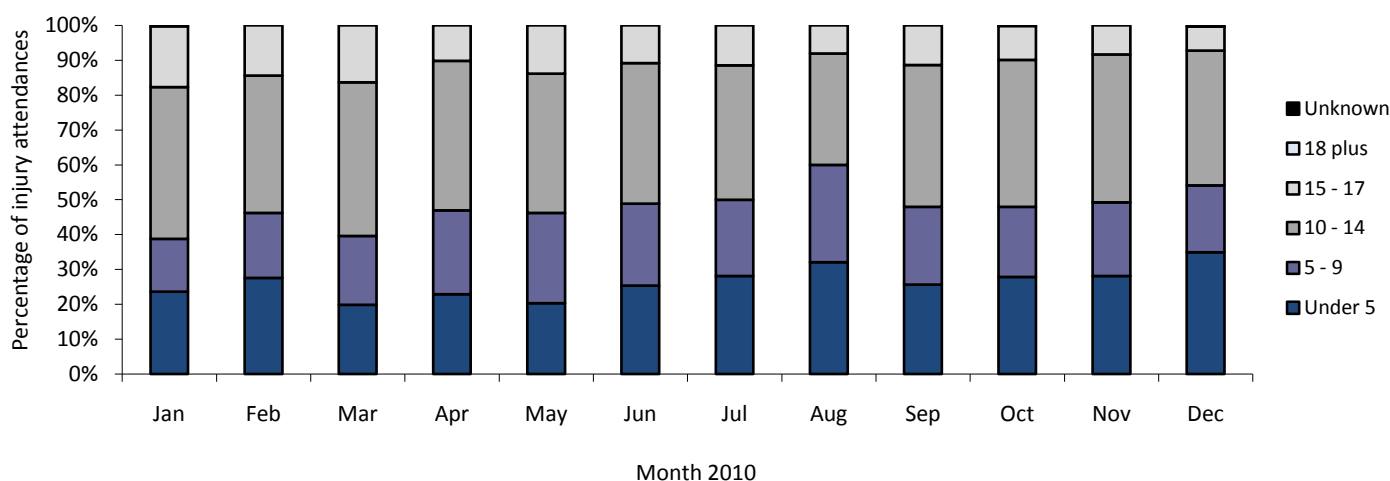


Table 1: Injury attendances by injury group, January to December 2010²³

Injury group	Jan	Feb	Mar	Apr	May	Jun	Jul	Aug	Sep	Oct	Nov	Dec	Total	%
Other injury	280	254	344	406	448	405	423	376	396	296	273	175	4076	72
Sports injury	58	107	153	106	131	117	85	44	123	140	88	29	1181	21
RTC	8	15	17	23	22	9	18	30	22	26	24	23	237	4
Assault	***	***	***	***	5	***	***	***	***	***	***	***	87	2
Deliberate self-harm	***	***	***	***	5	***	***	***	***	***	***	***	39	1
Total	356	381	533	546	611	545	541	455	551	474	392	235	5620	100

Table 2: Injury attendances by source of referral, January to December 2010⁴

Source of referral	Jan	Feb	Mar	Apr	May	Jun	Jul	Aug	Sep	Oct	Nov	Dec	Total	%
Other	332	340	486	511	560	503	493	426	507	435	361	212	5166	92
Health care provider: same or other	10	24	24	18	32	19	29	20	30	21	18	6	251	4
Emergency services	7	9	11	7	7	8	7	***	***	6	***	10	81	1
Self referral	***	***	6	***	8	10	8	***	***	7	***	***	58	1
Educational establishment	***	***	***	***	***	***	***	***	5	***	***	***	32	1
GP	***	***	***	5	***	***	***	***	***	***	5	***	23	0
Local authority social services	***	***	***	***	***	***	***	***	***	***	***	***	5	0
Unknown	***	***	***	***	***	***	***	***	***	***	***	***	***	0
Police	***	***	***	***	***	***	***	***	***	***	***	***	***	0
Work	***	***	***	***	***	***	***	***	***	***	***	***	***	0
Total	356	381	533	546	611	545	541	455	551	474	392	235	5620	100

Table 3: Injury attendances by location of incident, January to December 2010

Location	Jan	Feb	Mar	Apr	May	Jun	Jul	Aug	Sep	Oct	Nov	Dec	Total	%
Home	143	129	156	193	216	192	221	181	189	169	147	96	2032	36
Public place	87	112	146	193	183	178	171	223	200	150	105	72	1820	32
Educational establishment	70	95	152	84	119	104	83	5	97	87	95	52	1043	19
Other	56	45	79	76	93	71	66	46	65	68	45	15	725	13
Total	356	381	533	546	611	545	541	455	551	474	392	235	5620	100

Table 4: Disposal method of all injury attendances, January to December 2010

Disposal method	Jan	Feb	Mar	Apr	May	Jun	Jul	Aug	Sep	Oct	Nov	Dec	Total	%
Discharged - no follow up	237	285	379	362	418	376	339	306	403	361	313	181	3960	70
Referred to fracture clinic	61	42	76	78	91	75	75	60	70	51	24	20	723	13
Referred to other health care professional	27	28	29	45	43	36	40	32	28	20	23	18	369	7
Admitted to hospital bed	12	***	18	18	19	10	33	21	24	14	11	***	192	3
Transferred to other health care provider	7	7	11	21	18	15	20	14	9	17	7	6	152	3
Discharged - follow up by other health care provider	***	***	5	6	7	18	14	15	7	***	***	***	82	1
Referred to other out-patient clinic	***	***	5	***	6	7	10	5	5	5	6	***	62	1
Referred to ED clinic	7	***	5	5	***	6	7	***	***	***	***	***	47	1
Left ED before being treated	***	***	5	7	6	***	***	***	***	***	***	***	33	1
Unknown	***	***	***	***	***	***	***	***	***	***	***	***	***	0
Died in department	***	***	***	***	***	***	***	***	***	***	***	***	***	0
Left ED - refused treatment	***	***	***	***	***	***	***	***	***	***	***	***	***	0
Other	***	***	***	***	***	***	***	***	***	***	***	***	***	0
Total	356	381	533	546	611	545	541	455	551	474	392	235	5620	100

Published February 2011

Johnathan Rooney (Lancashire TIIG officer)

Centre for Public Health, Faculty of Health and Applied Social Sciences, Liverpool John Moores University

3rd Floor, Henry Cotton Campus, Liverpool, L3 2ET

Tel: 0151 231 4513 Email: j.rooney@ljmu.ac.ukWebsite: www.tiig.info (please note all data requests should be made through the TIIG website)

¹ Previous reports include data from the Minor Injury Unit. These data are no longer housed by Ormskirk's information team but by the PCT and therefore cannot be included in this report.

² *** Please note that all numbers less than five have been suppressed in line with patient confidentiality and if there is only one number in a category then two numbers will be suppressed at the next level (e.g. <6) in order to prevent back calculations from totals.

³ Due to low numbers firework injuries (n<5) have been included under the 'other injury' category.

⁴ GP=general practitioner.